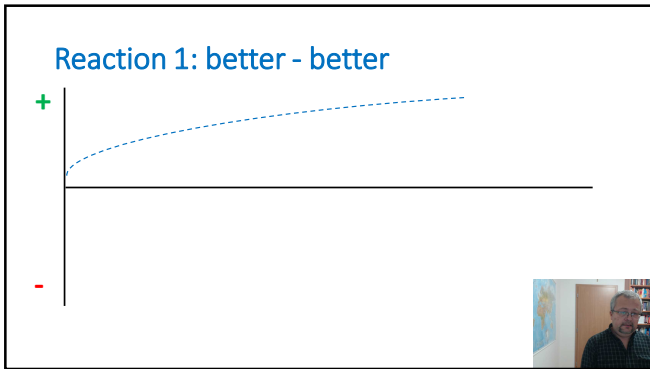


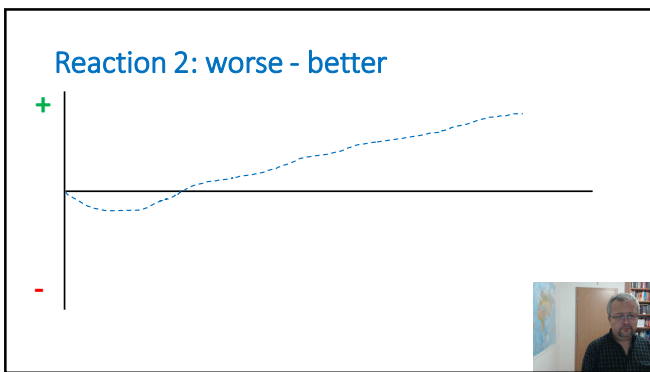
Reaction to the remedy

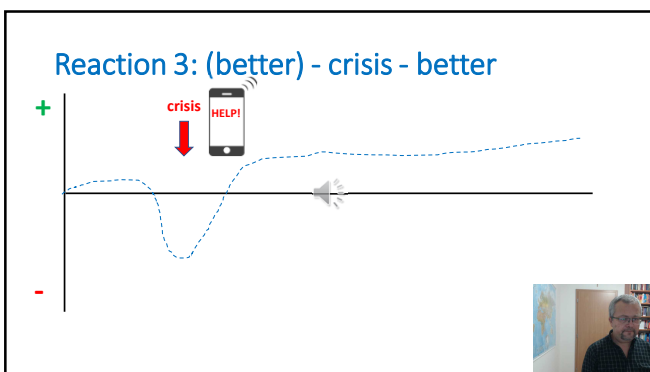
Handout for download

Reaction

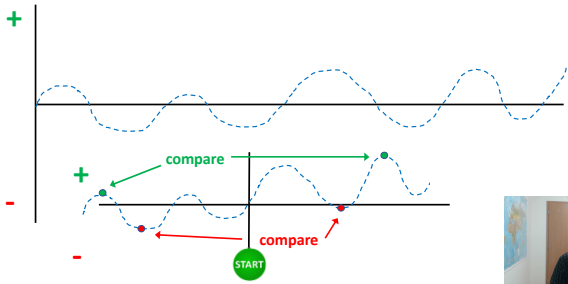
- In chronic cases, follow-ups are usually in intervals of 3-4 weeks



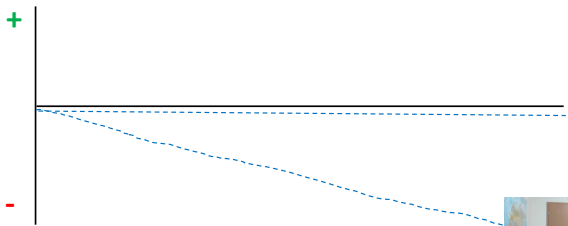




Reaction 4: sometimes better, sometimes worse

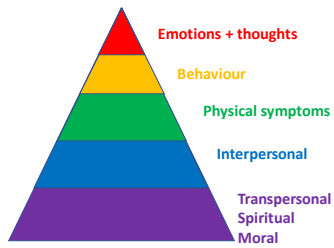


Reaction 5: bad – bad, bad - worse






Reaction on different levels


Rule of two



In the next video ...

Terminating the therapy





No science, no knowledge is necessary, apart from the simple methods described here-in; and they who will obtain the greatest benefit from this God-sent Gift will be those who keep it pure as it is; free from science, free from theories, for everything in Nature is simple.

Edward Bach
